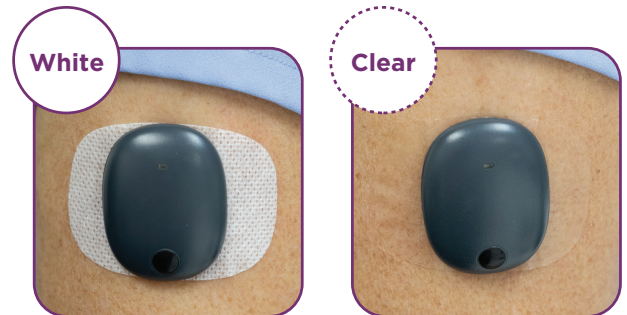


ADHESIVES TIPS

It is important to keep your Eversense Smart Transmitter firmly in place over the sensor. Extra support may be needed for sports, during heavy perspiration, or restless sleep. The tips below can help answer some of your questions. You may need to try different options until you find the one that works best for you. We have listed additional options for your consideration if needed.




General Tips

- Start with clean, dry skin. Remove any lotion or soap prior to placing adhesive patch and smart transmitter.
- Your kit comes with 180 white and 10 clear adhesive patches and you should try both. The white is perforated and may be better at wicking away moisture. The clear is optimal for discretion. Both types are gentle and use a medical grade non-reactive silicone adhesive. It does not include natural rubber latex.
- If any skin irritation persists, consult with your health care provider for additional treatment options.









Other Available Products and Options

Each product listed should be used in addition to the Eversense patch.

Product	How It Works	May provide extra skin adherence	May help decrease skin irritation	Tips
SKIN-PREP® or No-Sting SKIN PREP (Smith & Nephew) 	<ul style="list-style-type: none"> • Creates thin, tacky layer on the skin • Provides a barrier to skin moisture 	✓	✓	<ul style="list-style-type: none"> • Use only after incision is fully healed • Let dry completely before applying the adhesive patch and smart transmitter
SKIN TAC™ Adhesive Barrier Wipe 	<ul style="list-style-type: none"> • Creates thin, tacky layer on the skin • Provides a barrier to skin moisture 	✓	✓	<ul style="list-style-type: none"> • Use only after incision is fully healed • Let dry completely before applying the adhesive patch and smart transmitter • May need to use an alcohol wipe to assist with removing product
Smith & Nephew IV 3000 1-Hand transparent dressing 	<ul style="list-style-type: none"> • Physical barrier between skin and adhesive patch 	✓	✓	<ul style="list-style-type: none"> • Low allergy adhesive, physical barrier between skin and adhesive patch. • Comes in different sizes: 4" x 5" and 4" x 8"



ADHESIVES TIPS

Product	How It Works	May provide extra skin adherence	May help decrease skin irritation	Tips
Benadryl® Antihistamine Spray 	<ul style="list-style-type: none"> Creates thin barrier on the skin Calms the skin 	✓	✓	<ul style="list-style-type: none"> Use only after incision is fully healed Apply thin layer, wait 10 minutes Wipe off any excess and then apply adhesive patch and smart transmitter
Non-adhesive Wraps (Coban, Ace) 	<ul style="list-style-type: none"> Extra support for holding smart transmitter and adhesive patch in place 	✓		<ul style="list-style-type: none"> Do not wrap too tightly to avoid excessive tissue compression
KT Tape® Kinesiology Therapeutic Tape 	<ul style="list-style-type: none"> Extra support for holding smart transmitter and adhesive patch in place Gentle on skin 	✓		<ul style="list-style-type: none"> Elastic sports tape may be stretched as needed to fit arm comfortably Gentle on skin
GRIFGRIPS®  <p>Strip Grip Wing Grip</p>	<ul style="list-style-type: none"> Extra support for holding smart transmitter and adhesive patch in place Specifically designed for Eversense Smart Transmitter 	✓		<ul style="list-style-type: none"> To view colors, patterns, and designs, go to https://www.grifgrips.com/ Note: Available only in the USA
EversenseFix 	<ul style="list-style-type: none"> Extra support for holding smart transmitter and adhesive patch in place Specifically designed for Eversense Smart Transmitter 	✓		<ul style="list-style-type: none"> Order at https://www.diastuff.de/en/produkt/eversensefix-the-optimal-fixation-for-your-eversense-xl-transmitter/ Note: Available in Europe only
Unscented solid or spray antiperspirant (not deodorant) 	<ul style="list-style-type: none"> Prevents moisture from perspiration 	✓		<ul style="list-style-type: none"> Prevents perspiration Apply thin layer, wait 10 minutes, wipe off any excess and then apply adhesive patch and smart transmitter

References: Messer L, Beatson C. Preserving Skin Integrity with Chronic Device Use in Diabetes. *Diabetes Technology & Therapeutics* 2018; 20 Suppl 2. Tsai, A. Tips for Tackling Adhesive Irritation and Allergies. *Diabetes Forecast*, 2017 March.

The Eversense® E3 Continuous Glucose Monitoring (CGM) System is indicated for continually measuring glucose levels for up to 180 days in persons with diabetes age 18 and older. The system is indicated for use to replace fingerstick blood glucose (BG) measurements for diabetes treatment decisions. Fingerstick BG measurements are still required for calibration primarily one time a day after day 21, and when symptoms do not match CGM information or when taking medications of the tetracycline class. The sensor insertion and removal procedures are performed by a health care provider. The Eversense E3 CGM System is a prescription device; patients should talk to their health care provider to learn more.

For safety information, see <https://www.ascensidiabetes.com/eversense/safety-info>

Eversense, Eversense E3 Continuous Glucose Monitoring and the Eversense logo are trademarks of Senseonics, Incorporated. Ascensia, the Ascensia Diabetes Care logo are trademarks and/or registered trademarks of Ascensia Diabetes Care Holdings AG. All other trademarks are properties of their respective owners and are used solely for informative purposes. No relationship or endorsement should be inferred or implied.



Distributed by Ascensia Diabetes Care
 5 Wood Hollow Road, Parsippany, NJ 07054
 844-SENSE4U (736-7348)
ascensidiabetes.com/eversense



Manufactured by Senseonics, Inc.
 20451 Seneca Meadows Parkway
 Germantown, MD 20876-7005

© 2022. Senseonics, Inc. All rights reserved.
 © 2022. Ascensia Diabetes Care Holdings AG. All rights reserved.